

The Koto City Child-rearing Handbook has information for those who are pregnant or who currently have small children. Please make use of it.

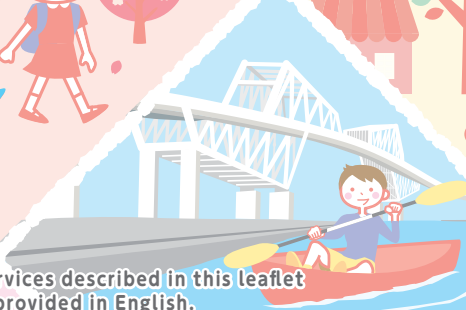


2018 Koto City

Child-rearing Handbook



スポーツと人情が熱いまち
江東区



The consultation services described in this leaflet are not necessarily provided in English.

For parents and guardians of children up to 3 years old and those currently pregnant, Koto City is sending out Hello My Baby mail (Maternity, New Mothers' Email). If you scan this QR code and send a blank e-mail, you will get a message allowing you to sign up. Please make use of it. For more details, see p. 7, 8.

Maternity E-mail



New Mothers' E-mail



Child-rearing in Koto City

Feel Free to Ask

After Finding Out You're Pregnant

After Delivery

Facilities for Children

When You Need Help with Child-rearing

Outings with Children

Learning Opportunities

For Single-parent Households

For Children with Special Needs

Child Hotline

For Single-parent Families

Koto Children's
Festival mascots
Hiro-kun



Contacts

Parent-child Counseling

Contact

Protection First Division, Welfare Office ☎3645-3106 FAX 3647-4917
Protection Second Division, Welfare Office ☎3637-2707 FAX 3683-3722



Parents' Independence Support Staff offer help with solving various problems, including finance and schooling for single parent families.

Counseling about child support

Contact

Child Support Counseling Support Center
Toll-free number 0120-965-419 ☎3980-4108



A Ministry of Justice service offering assistance with child support and visitation.

Economic support

Child-rearing Allowance

Contact

Benefits Section, Child-rearing Support Division ☎3647-4754 FAX 3647-9196

Child-rearing allowance

■ Eligibility

Aid distributed to single-parent families or to ones in similar situations.

• For those who are taking care of children who satisfy one or more of the following conditions and who have not yet reached the first March 31st after his/her 18th birthday:

- (1) Parents have divorced
- (2) Born outside of marriage
- (3) A parent has passed away/is missing
- (4) Neglected by a parent continuously for more than a year
- (5) A parent has received a domestic violence protection order from the court
- (6) A parent has been imprisoned for more than a year due to laws or regulations
- (7) A parent has a severe disability*

※ Please contact for more details.



■ Monthly amount

• ¥13,500 per eligible child

Disability allowance

Aid distributed to those taking care of children with special needs.

■ Eligibility

• For those who are taking care of children who satisfy one or more of the following conditions and who are under 20 years of age:

- (1) Children with 1st - 2nd-grade physical disability certificate
- (2) Children with 1st - 3rd-level Ai no Techo
- (3) Children with brain paralysis or progressive muscular atrophy

■ Disability allowance

• ¥15,500 per eligible child



Child-rearing
in Koto City

Feel Free
to Ask

After Finding Out
You're Pregnant

After Delivery

Facilities for
Children

When you Need Help
with Child-rearing

Outings with
Children

Learning
Opportunities

For Single-parent
Households

For Children with
Special Needs

Child Hotline



Dependent Child Allowance Amount as of August 1st.

Contact Benefits Section, Child-rearing Support Division ☎3647-4754 FAX 3647-9196

■ Eligibility

Aid distributed to single-parent families or to ones in similar situations.

•For those who are taking care of children who satisfy one or more of the following conditions and who have not yet reached the first March 31st after his/her 18th birthday (or who are under 20 years old in the case of moderate to severe disabilities):

- (1) Parents have divorced
- (2) Born outside of marriage
- (3) A parent has passed away/is missing
- (4) Neglected by a parent continuously for more than a year
- (5) A parent has received a domestic violence protection order from the court
- (6) A parent has been imprisoned for more than a year due to laws or regulations
- (7) A parent has a severe disability*

※Please contact for more details.

•When the registering person or the child can receive public pension etc., the difference will be given if the childcare support allowance is bigger.

■ Monthly amount

•First eligible child ¥10,030 to ¥42,500

•Second eligible child ¥5,020 to ¥10,040

•Third eligible child and onward Additional ¥3,010 to ¥6,020 each

※Changes depending on the income of the applicant in the previous year or the year before.

※When the accreditation period surpasses 5 years, the allowance may be cut in half.

Aid for Medical Expenses for Single-parent Families

Contact Benefits Section, Child-rearing Support Division ☎3647-4754 FAX 3647-9196

Medical certificates will be given to the guardians (caregivers) and children of single-parent families or those in the same situations and who are taking care of the children not yet reached the first March 31st after their 18th birthday (under 20 years old in the case of moderate to severe disabilities). Part or all of the cost of your individual contribution towards medical expense will be covered when you present your health insurance card at a medical institution.

※The eligibility is the same as Child-rearing Allowance and Dependent Child Allowance. See here for more details.



Basic Pension for the Bereaved

Contact Pension Section, City Residents Division ☎3647-1131 FAX 3647-9415

When a person who was in the national pension system passes away, the spouse with children or the children of the deceased will receive aid.(The term children refers to those who have not yet reached the first March 31st after their 18th birthday, or those under 20 years old if they have 1st or 2nd grade disabilities as stated by the Pension Act. Other conditions apply.)

See here for more details.



Employee's Pension for the Bereaved

Contact

Koto Pension Office 5-16-9 Kameido ☎3683-1231 FAX 3681-6549

When a person who was a member of an employee pension system passes away, the spouse with children or the children of the deceased will receive the employee's pension for the bereaved in addition to the basic one (The term children refers to those who have not yet reached the first March 31st after their 18th birthday, or those under 20 years old if they have 1st or 2nd grade disabilities as stated by the Pension Act.)

Loans of Single-parent Welfare Funds

Contact

Protection First Division, Welfare Office ☎3645-3106 FAX 3647-4917
Protection Second Division, Welfare Office ☎3637-2707 FAX 3683-3722



12 different types of welfare funds, such as living expense funds and educational funds for single parents supporting their children of age under 20 years old, are offered.

You can check more detailed information here.

Independence Support

Job and Independence Support for Single-parent Families

Contact

Protection First Division, Welfare Office ☎3645-3106 FAX 3647-4917
Protection Second Division, Welfare Office ☎3637-2707 FAX 3683-3722

Pre-counseling with the Welfare Office required.

Conditions apply, such as whether you receive Dependent Child Allowance or are at a similar income level etc.

- ◇Single-parent family independence support program plans
Single-parent family independence and job support staff at the welfare office will create independence support plans catered to the client's situation and needs, and help job hunting based on the plans in cooperation with Hello Work.
- ◇Single-parent family higher-level job training encouragement aid
Training encouragement aids will be given to those who go through a year or more of training at facilities to earn certificates that enable single parents to get higher-level jobs. Completion support aids will be given after completion of the curriculum.
- ◇Single-parent family independence support educational training aid
Independence support educational training aid will be given to single parents when they take educational training courses for job-hunting.

Hello Work (public job-placement office: job-hunting support and job training)

Contact

Hello Work Kiba, 2-13-19 Kiba ☎3643-8609

Support for those looking for jobs, with up-to-date employment information, consultation, and references. Registration for employment insurance is also available. Counseling and registration for technical development training and job training is also available so you can obtain the knowledge and the technical abilities you need for when you get a job. The content varies, including computer skills, nursing care, and accounting. Some may qualify for unemployment aid from employment insurance or other programs if they meet certain conditions.



Other Support

Mother-child Life Support Facilities

Contact Protection First Division, Welfare Office ☎3645-3106 FAX 3647-4917
Protection Second Division, Welfare Office ☎3637-2707 FAX 3683-3722

Facilities that admit single-mother families with children under 18. These facilities are targeted those who need temporary help to stabilize everyday life, and who anticipate to be self-sufficient in under 2 years. You can check more detailed information here.



Metropolitan Public Housing

Contact Tokyo Housing Supply Public Corp. Metropolitan Public Housing Application Center ☎3498-8894
URL: <http://www.to-kousya.or.jp/toeibosyu/>

- ◇ Preferential treatment system for metropolitan public housing for single-parent families (higher chance of being chosen)
- ◇ Point-based system for metropolitan public housing for single-parent families (Places given in the order of severity of poverty based on document and examinations of the situation.)
- ◇ Special metropolitan public housing fee discount for single-parent families



City Public Housing

Contact Housing Management Section, Housing Division ☎3647-9464
URL: <https://www.city.koto.lg.jp/kurashi/sumai/moshikomi/kue/index.html>

- ◇ Special city public housing discount for single-parent families available.
- ◇ Application information will be available on 'Koto-kuho' and the Koto City website when spaces are open up (application periods scheduled for June and December)
Places will be given based on lotteries, no preferential treatment.



Private housing rental assistance (Residency aid)

Contact Housing Guidance Section, Housing Division ☎3647-9473

Assistance is offered for single parent households in Koto City who need to find a new place to live due to reasons like eviction or rent increases. After applying at the city office, you will receive guidance on vacant properties at either a counter at the city office (Tuesdays every week, reservations only) or at a participating real estate agent. There is a support system to cover part of the cost of down payment once a contract has been signed. (Income restrictions and more apply)

■ Requirements

- ① Living in Koto City (Those whose parents live in the city and who want to move close to them are not eligible)
- ② Family made up of a single parent and children under the age of 18
- ③ Family must be able to live on their own
- ④ Having trouble with housing
- ⑤ Someone can act as a guarantor (There is a loan guarantee system)

Toei Transportation Free Tickets

Contact Benefits Section, Child-rearing Support Division ☎3647-4754 FAX 3647-9196

The receiver of Dependent Child Allowance or any one member of the same household is eligible for free tickets for the metropolitan bus, Toei subway, Toden, and Nippori Toneri Liner.

■ **Required document** Dependent Child Allowance certificate



Discount on JR Commuter Pass

Contact

Benefits Section, Child-rearing Support Division ☎3647-4754 FAX 3647-9196

A 'qualification certificate' and 'ticket purchase certificate' will be issued to households receiving Dependent Child Allowance, which offers a 30% discount on JR Commuter Passes.

■Required documents

- ① Dependent Child Allowance Certificate
- ② Photograph of the purchaser (taken within the past 6 months, 4 cm x 3 cm in size)
- ③ Personal stamp

Reduction and Exemption of Metropolitan Water Bill

Contact

Metropolitan Waterworks Bureau Koto Service Office 1-7-2 Shinsuna
☎5633-9053 FAX 3640-4398

Recipients of dependent child allowance and special dependent child allowance are exempted from the basic water bill.

■Details on reduction and exemption

Water charge Total sum of the basic fee plus one month of usage fee up to 10m³

Sewerage charge One month of usage fee, up to 8m³

■Documents to bring to the Waterworks Bureau Service Office

- ① Certificate of dependent child allowance or special dependent child allowance
 - ② Stamp
- ※Please also bring something that has the customer number written on it (meter inspection slip or bill) along.



Exemption from Collection Charge for Fee of Bulk Trash

Contact

Bulk Trash Reception Center ☎5296-7000
URL:<http://sodai.tokyokankyo.or.jp>

Recipients of dependent child allowance and special dependent child allowance living in Koto City are exempted from collection fee of bulk trash etc. with registration.

